



## Access control

Cutting-edge, intelligent  
solutions for site security



# Contents

01   Mitrefinch workforce management solutions .....	02
02   Access control .....	03
03   Why choose Mitrefinch? .....	07
04   How we help you manage your workforce .....	10
05   Our services .....	13
06   For the techies .....	16
07   We care about security .....	17

# 01 | Mitrefinch workforce management solutions in a nutshell

## Core functions

Time & attendance	HR	Payroll	Analytics	Access control & hardware	Professional services
-------------------	----	---------	-----------	---------------------------	-----------------------

## User experience

Mobile	Hardware /Terminals / Clocks	Portal
--------	---------------------------------	--------

## Delivery options

Hybrid	Cloud	On premise
--------	-------	------------

## Business outcomes

Workforce productivity	Controlled labour costs	Compliance	Employee engagement	Site security
------------------------	-------------------------	------------	---------------------	---------------

## 02 | Access control

Our access control offers out of the box enterprise grade time and attendance clocking and total perimeter security ensuring you have complete control and visibility of who can access to your sites, buildings and rooms.

Mitrefinch networked terminal hardware combined with our own secure operating system delivers powerful, resilient and fully customisable biometric and proximity based access control. All managed visually with our access control software from a central networked location.

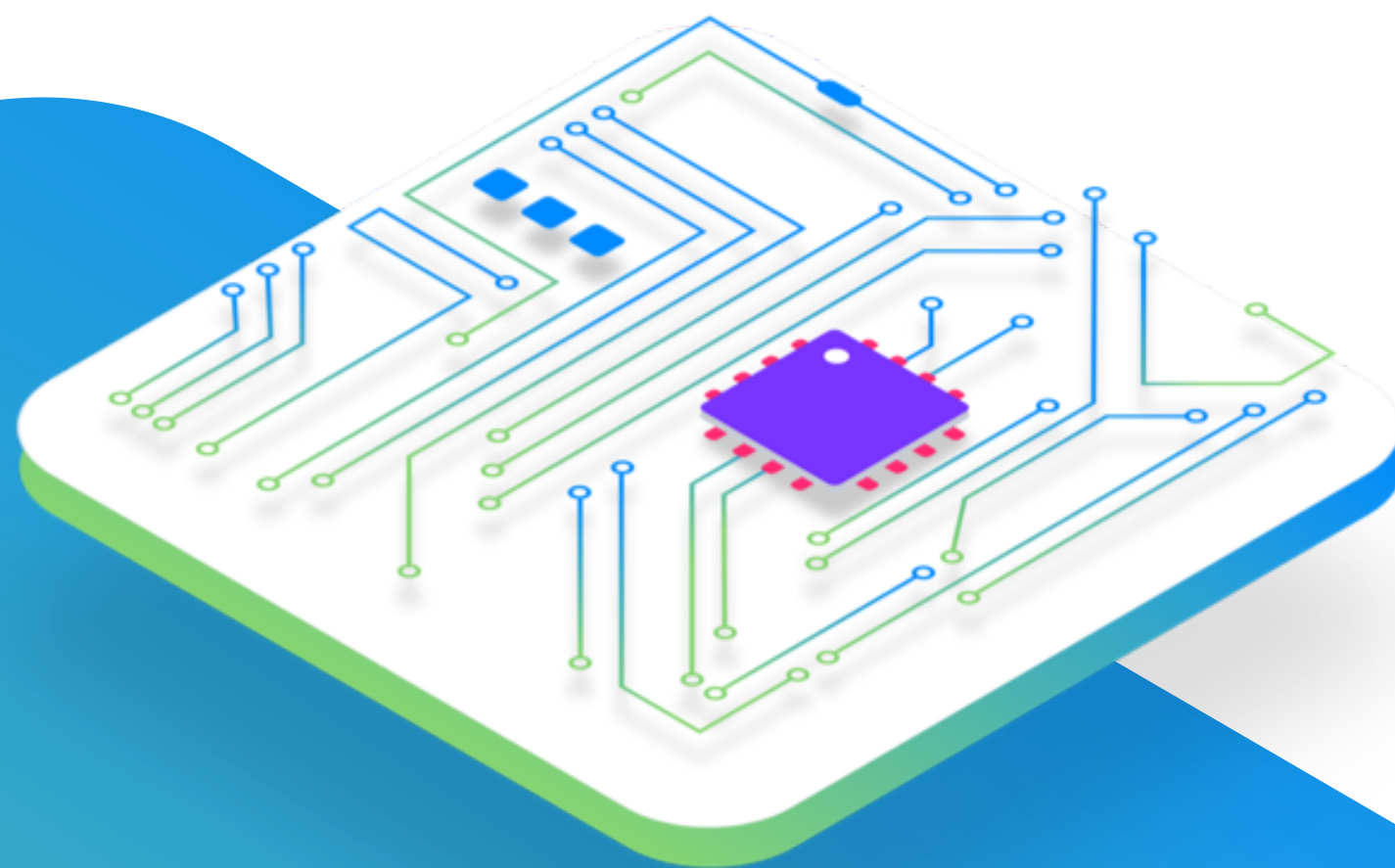


## Hardware

We design and manufacture our own clocking terminals, biometric readers and access control units. They work exclusively with our own software and ensure the deepest level of integration, security and performance.

Our hardware is fully tested to work in the most harshest of environments. Unlike systems running commercial or mobile operating systems that contain uncontrolled applications, our operating system is security hardened, release controlled and designed exclusively to run on our own hardware.

We can be sure that our software is under your control at all times.



## Integrated platform

Our access control solution is part of our fully integrated application platform. As a customer this means your employees identity and movements are ready to use in our time & attendance system and Flexipay Payroll software.

Delivering a true end to end entry to pay workforce management solution. Powerful reporting delivers a complete user vision, offering transparency of movement, real-time alerts and zone based auditing so you can demonstrate and ensure your business remains fully secure.

## Securing the future

We are invested and constantly innovating our entire access control suite. All new products will work alongside and enhance existing systems meaning whatever the future brings you will remain fully protected and capable of benefitting from next generation innovations and developments as we create them.





## Installation & support

We have a worldwide network of expert installation engineers and implementation consultants. We have **completed over 50,000 successful projects** servicing and protecting airports, oil refineries, public sector security facilities, pharmaceutical giants, multi-site, multi-country, right down to small local business.

We offer a turn key installed and configured service, full user training backed by our own dedicated support center and on site engineer maintenance support.

As experts in security you can be sure all of our products and services are designed and installed to meet current quality and safety standards, with minimal site downtime and the safety and convenience of your employees as top priority.

## Simple & complex

Designing and manufacturing our own terminals and integrating custom hardware means we understand how to build and deploy sophisticated bespoke solutions.

With over 40 years of engineering experience we have ready made solutions for turnstiles, vehicle barriers and more. Our own in house professional design service will work with you to create a security solution exclusively for your requirements, however large or small.

We can install and control a single door or design multi-site scenarios containing hundreds of access control points.

## Barriers & turnstiles

Our turnstile and barrier range is designed and manufactured exclusively for Mitrefinch, to meet exacting quality and safety standards. Because we supply all of our turnstiles and barriers directly and install them on your site, we can deliver uncompromising quality.

[A full brochure is available on request](#)



## 03 | Why choose Mitrefinch?

### Solutions focused

Our fully integrated suite of software and hardware offers a cost effective route to increased profits by solving common business efficiency challenges.

Our customers are results driven, we are too.

### Investing in innovation

We are continually investing and innovating our product suite. We have a dedicated research and product design team that have extensive and long range software and hardware roadmaps to ensure our customers are never left behind on legacy products.

They will always have access to new and exciting technologies we create.

### You'll be in safe, experienced hands

As the pioneers of computerised clocking in systems during the late 1970s, we have been designing and developing intelligent workforce management solutions for over 40 years and are trusted by over **7,500 customers globally**.

**Manage your workforce; manage your efficiency, productivity and profitability.**



## Flexibility

Our solutions are fully customisable to accommodate the working patterns and work rules of your business, supporting flexitime and shift work across multiple sites and pay centres.

## Mobilising workforces

As the structure of the workforce evolves and grows, with more and more workers than ever working flexible patterns, from home, at various sites and on the road. Our solutions help you stay on top of your people and their productivity.

## We practice what we preach

We use our solutions to support a flexible, high performing culture within Mitrefinch, across our UK and global sites. We enjoy great employee visibility, automated schedule generation, job recording, flexitime and the Mitrefinch mobile web app.

All of our employees engage with one or more of our solutions everyday - it's the best way for us to keep developing the very best software and tech solutions.



Absolutely magnificent; nothing is too much trouble for them.



## Cloud or on-premise solutions – it's your choice!

We understand that organisations have different requirements when it comes to technology deployment. Whatever your needs, we work with you to implement your solutions your way.

## Here to support

Our UK based support services are on hand to assist at any time.

We provide dedicated account managers as standard to help customers realise the benefits of their investment in Mitrefinch products.



The system is frequently updated and Mitrefinch's helpdesk is extremely useful when personalising time & attendance to meet our particular needs.



*Axminster*<sup>™</sup>  
CARPETS



## 04 | How we help you manage your workforce

Our solutions, modules, services and products are designed to be used in isolation or can be fully integrated; creating a seamless and efficient end to end workforce management process.





## Time & attendance software

Managing your workforce in an efficient, fast and smart way can significantly improve your profit and productivity. Our leading time and attendance system delivers better operational control and support the day to day management of your workforce.



## Flexipay payroll software

The ability to run fast, accurate and compliant payroll underpins our payroll software capability.

With plenty of added features such as our unique instant calculations, self service functionality and enhanced intuitive user experience, you can rely on Flexipay as your complete payroll solution.



## HR management software

Our securely integrated HR solution reduces the administrative burden of keeping on top of HR paperwork and processes. Providing accurate employee records and a single centralised record for your employees.





## Access control & hardware

We combine next generation access control and time & attendance on a single platform. A versatile system that supports multi-site management and remote access, which is scalable from 1 to 1000+ doors.



## Consultancy, implementation & support services

Solutions are only as good as the people who implement and support them. Our Professional Services are honed on maximising customers' business benefits and the outcomes you demand, through our proven methodologies over the course of your implementation project and beyond – you always have our experts on your side.

## 05 | Our services

Our team has hundreds of years' experience and **over 50,000 successful project deliveries** across the globe, so we understand your business and your expectations for a quick return on investment.

Our multi-disciplinary implementation teams are dedicated and helpful and provide expert knowledge, guidance and assurance throughout your project. We know just how much this business change means to you.

Whatever your experience in project delivery, rest assured we've supported thousands of customers just like you and will deliver an on time, on budget solution that earns its return on investment from day one, fits your every need and integrates perfectly within your business.



## Project management

So much more than oversight of system implementation, our project management provides assurance around your business change. Projects can be complex and time consuming, so we'll work together at the outset to validate your objectives and measures of success, providing the focus to achieve, minimising disruption to business as usual activities and whilst keeping a close eye on costs.

We'll lead the partnership from inception, dealing with change, managing risks and issues and ensuring strong stakeholder management – as we do for the many hundreds of successful projects we deliver each year.

## Consultancy

From the first project meeting through to a successful go live, our consultancy team are here to help deliver the benefits you expect from our products.

With breadth of experience in every industry and market sector, we specialise in getting to the heart of your business processes to ensure good practices and embrace the change opportunity so that you get the best from the Mitrefinch product suite.

We pride ourselves on our track record of swift and smart implementations, ensuring focus on your measurable outcomes for the project from the initial specification through to successful go live and beyond.







## In-project response

Our support and maintenance options are designed to help you get the best from your Mitrefinch solution and give peace of mind that you are in good hands should the unexpected arise.

From our online support desk, support line, email, customer community to videos and guides you can easily find the information and support you need.

## Virtual assist

We won't rest on the success of your implementation when you've gone live. After the project, if you need to retain the commitment to help embed changes, or deliver post project benefits, our Virtual Assist service provides consultancy at your convenience. It's who you want, when you need them.

An infinitely scalable model, we ensure a time-bound response to system changes - which is particularly valued in fast-paced organisations where change, growth and acquisitions are very much business as usual. Need an urgent change, want to book some virtual training for new employees? Lean on us and relax.



## 06 | For the techies



Mitrefinch offers something special when it comes to deploying and supporting technology, whether your solution is hosted or on premise.

### APIs & adaptive technology

Our technology loves other systems. We provide APIs and other tools for importing and exporting data.

This allows us to integrate with many providers and individual customer requirements.

Our accessible and adaptive solution works on almost any device and is developed against accessibility guidelines WAG 2.0 AA.



## 07 | We care about security

### ISO9001 Quality system management

Accredited ISO9001 is an internationally recognised standard for quality management systems, scrutinising all areas of business life.

Mitrefinch have been ISO9001 accredited since 2009.

### ISO14001 Environmental management

Accredited ISO14001 is an internationally recognised standard for the development of an effective Environmental Management System and it exists as a framework to assist organisations in developing their own environmental management system.

Mitrefinch gained ISO14001 accreditation in 2011.

### ISO27001 Information security management

Accredited ISO27001 is an internationally recognised standard for information security management.

Mitrefinch gained ISO27001 accreditation in 2015.

### HMRC recognised

Our Flexipay payroll software has been tested for online payroll capability and RTI and is recognised and listed by HMRC.



**0330 726 0066**

[solutions@mitrefinch.co.uk](mailto:solutions@mitrefinch.co.uk)

[www.mitrefinch.co.uk](http://www.mitrefinch.co.uk)

